



Health Equity DX Subcommittee

| | | |
|------------------------------------|--|--|
| Leader Institute Representative | Jichi Medical University Health Equity Innovation Hub | Yukifumi Monden (Deputy Director) |
| Leader | Chuo University Faculty of Letters Alm Co., Ltd. Jichi Medical University, Department of Pediatrics | Kenkichi Takase (Professor) Teppei Sakano (President & CEO) Hideki Kumagai (Professor) |

Caring for Carers: A Critical Need



1.Introduction: Who Are Caregivers?

1. Definition of a Carer
2. Types of Care Provided

2.Challenges in the Current System

1. Gaps in Social Support
2. Lack of a System to Protect Caregivers
3. The Healthcare and Welfare Divide

3.Classification of Caregivers

1. Young Carers
2. Family Child-Rearing Carers
3. Family Elderly Carers

4.Economic Impact of Caregiving

1. Annual Economic Loss Due to Caregiving
 1. Young Caregivers: 100 billion yen
 2. Business Caregivers: 9 trillion yen

Carers Scenarios

Students taking on household responsibilities in place of carers



Young Carers

Families caring for children with illnesses or developmental disabilities



Family Child-Rearing Carers

Students taking on household responsibilities in place of carers



Family Elderly Carers

Solution for This Project



Visualization and Advanced Support for Carers

Target ①: Extraction of Carers-Specific Features

(e.g., Gut-Brain Correlation & Circulatory Changes / Distance & Voice Analysis / Sleep Rhythm Monitoring)

Target ②: Providing Solutions for Diverse Needs Based on Carers' Age and Condition

1. Young Carers
2. Family Child-Rearing Carers
3. Family Elderly Carers

Target ③: Establishing a Medical DX Data Infrastructure as the Core of the Health Equity Innovation Hub

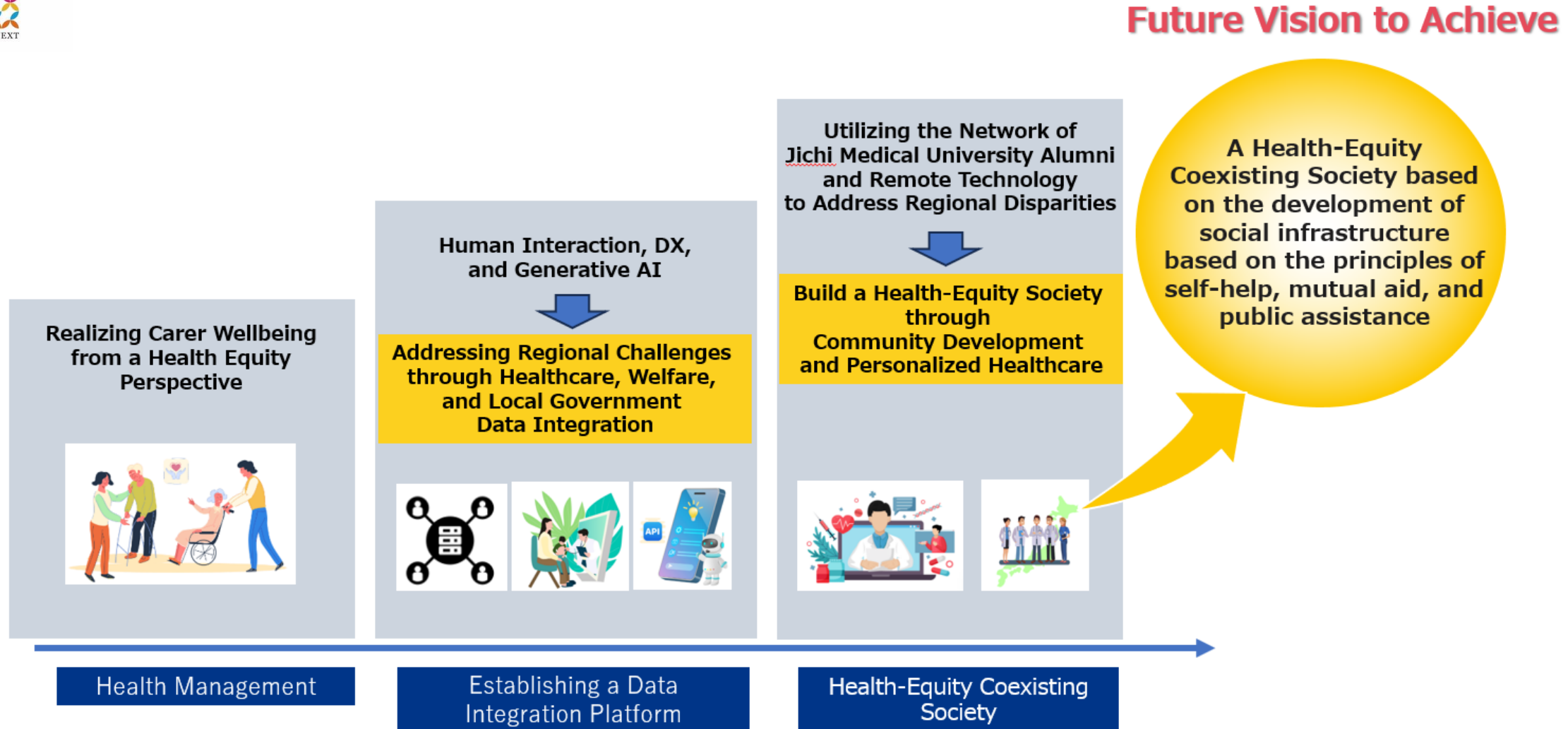
Utilizing Evaluation Methods and Data to Encourage Corporate Participation and Promote the Development of Wellbeing, Healthcare, and Welfare Content



Data Collection in the Application



Future Vision



Action Plan



| Research and Development Challenges | 2024 | 2025 | 2026 | 2027 | 2028 |
|--|------|---|--|---|---|
| 1 Development of Evaluation Tools for Measuring Predictive Indicators | | <ul style="list-style-type: none"> • Develop an application to quantify carer characteristics and collect data | <ul style="list-style-type: none"> • Development of a Database Linked to the Application • Creation of an Evaluation Tool to Predict the Level of Support Needed for Carer | | |
| 2 Empirical Research to Support Young Carer | | <ul style="list-style-type: none"> • Create touchpoints between caregivers and care recipients across generations to accumulate caregiver information and needs • Collect and digitize data held by hospitals, local governments, schools, and workplaces for each generation | | | <ul style="list-style-type: none"> • Expansion of App Functions to Provide Carer Support Content • Organization of Existing Intervention Content and Enhancement of New AI-Generated Intervention Content |
| 3 Empirical Research to Support Family Childcare Carer | | | | | |
| 4 Empirical Research to Support Family Elderly Carer | | | | | |
| 5 Establishment of a Data Infrastructure for Healthcare, Welfare, and Local Governments | | | <ul style="list-style-type: none"> • Establishment of a Care Data Infrastructure | <ul style="list-style-type: none"> • Identification of Effective Indicators for Outcome Evaluation • Establishment of a Multi-Sector Information Sharing Infrastructure | |