



BiocK Mental Health Subcommittee

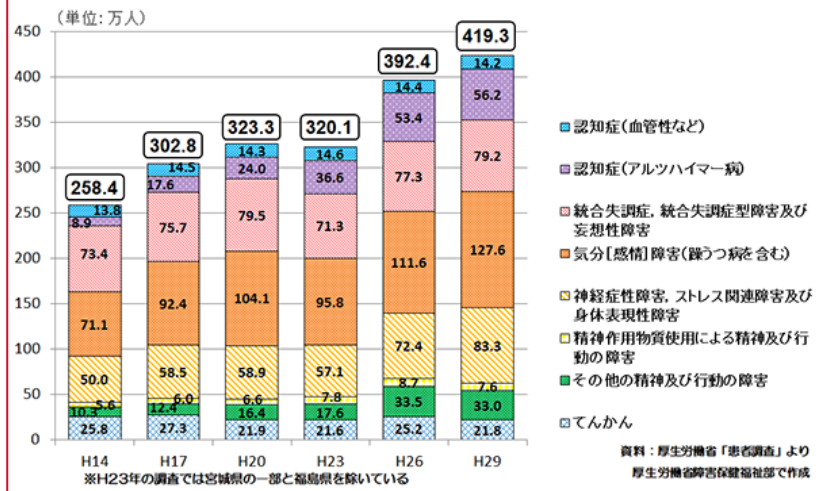
Shionogi & Co., Ltd.



From prevention to treatment and post-treatment support, Many challenges at every stage

- Patients themselves cannot recognize that they are 'sick' and it takes time to see a doctor, which makes it worse
- Early diagnosis is not established, there is a possibility of recurrence even if treated, and it is difficult to return to society
- Diverse symptoms coexist, making diagnosis difficult
- There are many patients in their 40s who are in the prime of their careers, and the economic loss is also large (approximately 2.7 trillion yen in economic benefit estimation).
- The number of patients is expected to increase due to the impact of COVID-19

**精神疾患を有する総患者数の推移
(疾病別内訳)**



- **Mental illness has a great impact not only on the patient, but also on those around the patient (family and society).**
- **The number of patients with mental illness is increasing, and it is necessary to solve the problem**
- **Decreased QOL and decreased productivity due to mental disorders are also major problems**

Activity Policy of the Mental Health Subcommittee



A platform for providing mental health care solutions one after another

perinatal mental disorders



general mental illness



based on symptoms
General mental illness*

- Prevention and enlightenment that captures changes in daily life
- Healthcare solutions using objective data

- Starting with the mental health problems of expectant and nursing mothers, which are increasing due to the declining birthrate, aging childbearing age, and the impact of the corona crisis.
- Verification of various healthcare solutions and acquisition of evidence based on data
- Building a platform for evaluating and refining solutions linked with data such as PHR

Evaluation and refinement of solutions based on objective data

Proposing the best solution

Expand healthcare solutions from perinatal period to general mental disorders

- Deploy multiple data-driven healthcare solutions by 2025
- Aiming to improve social productivity by improving mental health

Why did we choose perinatal period?

Even if there are various disorders during pregnancy and lactation
I want to change the mindset of “I will endure it anyway!” and “I will give up just because it is temporary”!

changes in your body due to unaccustomed childcare
mental and physical disorder

+ loneliness

- Suicide of expectant and nursing mothers
- Child abuse
- Deterioration of marital relationship

- **Giving up on self-actualization**
- Opportunity loss for social contribution
- Decline in social productivity

The collapse of a comfortable home



based on scientific evidence
Provision of information and solutions
(medicine and services)



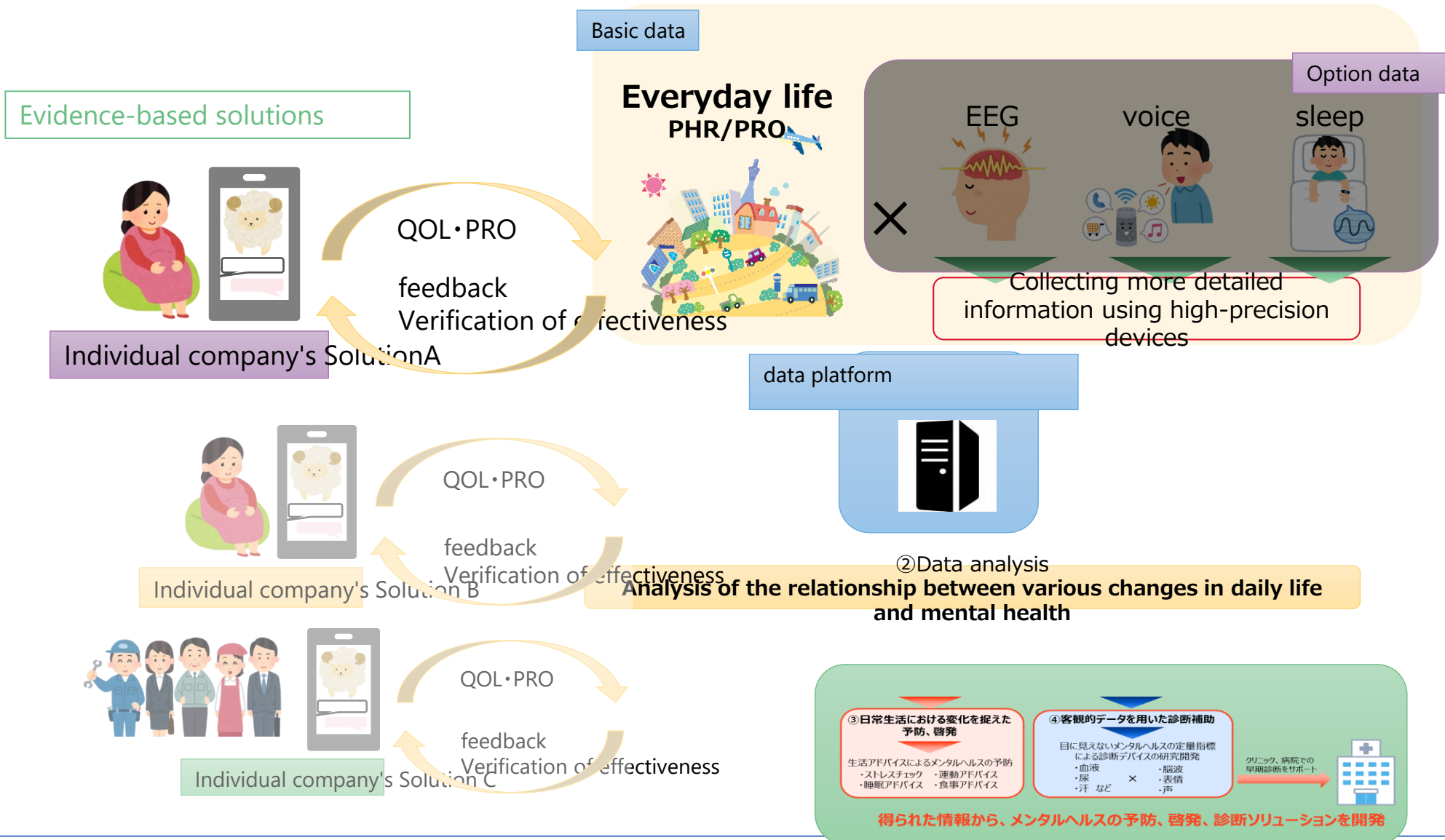
self realization
(mother + family)

building a comfortable home
(Healthy growth of children)

Mother's physical and mental health



Concept: Platform and Solution



Draft action plan up to 2025



	2022	2023	2024	2025
action	<ul style="list-style-type: none"> • Infrastructure development and planning for solution demonstration 	<ul style="list-style-type: none"> • Field demonstration for expectant and nursing mothers • Examination of expansion to non-pregnant and nursing mothers 	<ul style="list-style-type: none"> • Field demonstration for expectant and nursing mothers (2) • Demonstration of solutions for non-pregnant women 	<ul style="list-style-type: none"> • Implementing Maternal Solutions • Implementation of mental health solution platform using data
action detail	<ul style="list-style-type: none"> • Selection of data infrastructure partners • Fabrication of solution prototypes • Examination of demonstration fields 	<ul style="list-style-type: none"> • Demonstration of effectiveness verification based on solutions and PHR, PRO • Recruitment and selection of solutions from other companies' partners • Preparing Solutions for Common Mental Illnesses 	<ul style="list-style-type: none"> • Expanding data acquisition for solution validation (as research) • Demonstration of solutions to common mental disorders (multiple including pregnant women) 	<ul style="list-style-type: none"> • Development of solutions for people suffering from mental disorders • Towards a world where people can live and work energetically

Presentation of demonstration results and introduction of solutions at Expo 2025 Osaka