

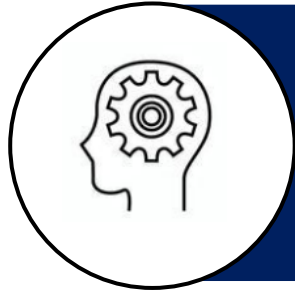


Future Urban Subcommittee

Sustainable Society

Dissemination of Future Intellectual Infrastructure Models

- Osaka University
- Tsuyoshi Sekitani, Director & Professor of Co-Creative Incubation Center



R&D based on the **world's most advanced science and technology**
(Numerous publications in top academic journals)
**"Implementing science and technology that can save lives even in the
harshest of environments."**

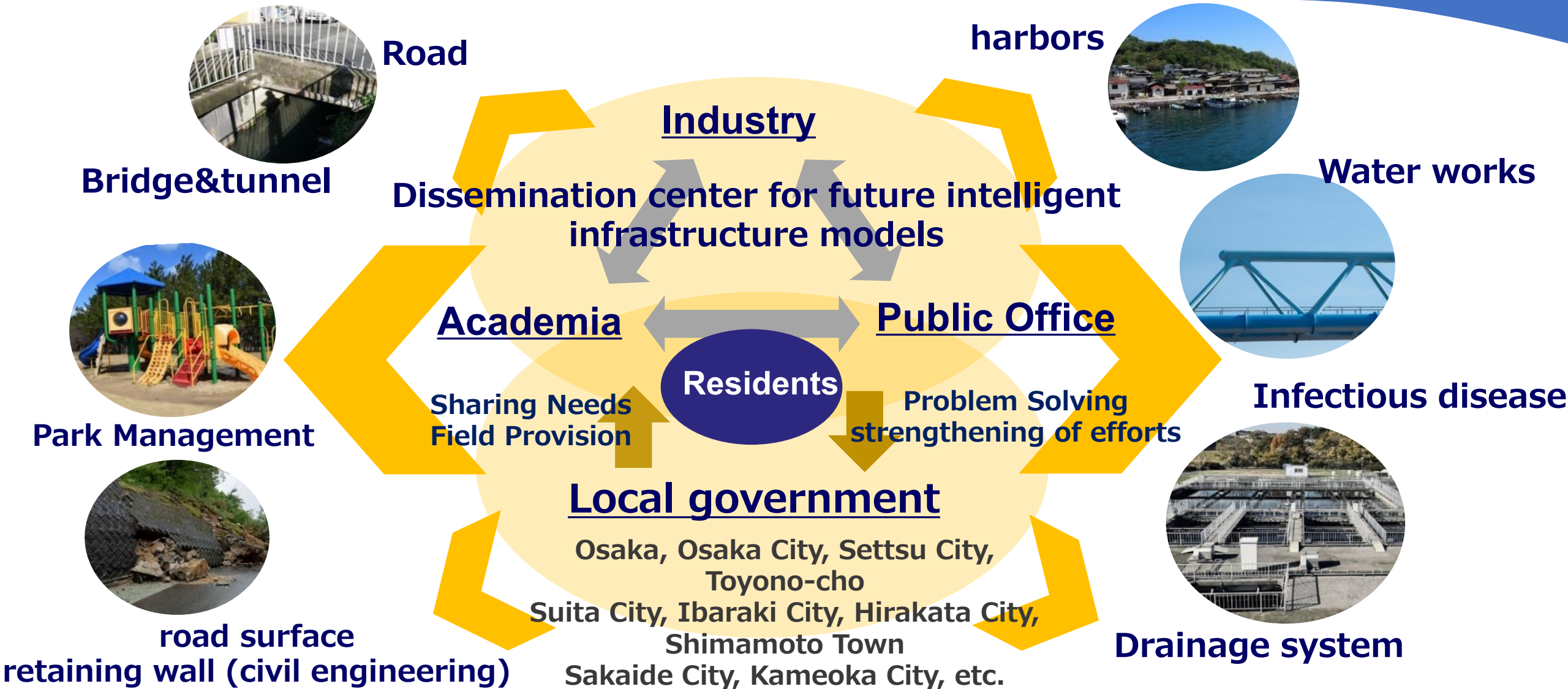


Regional collaboration with **outstanding young researchers at the core**
(Mainly composed of more than 120 young organizations active in diverse scientific fields)



Utilizing the **incubation facility network Sustainable management system**
(collaboration among academia, local government, and business)

Stakeholders involved in community development and Establish a system of industry-academia-government-private sector collaboration starting with young researchers



"Universities that fosters regional vitality" through regional co-creation



Community
Co-creation

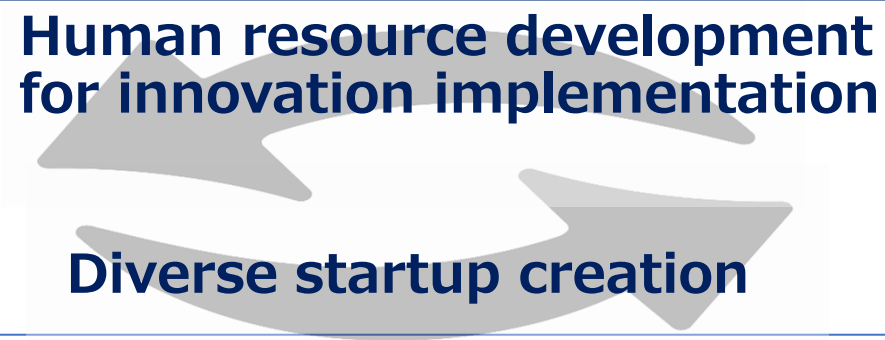
Residents, municipalities, universities, businesses, government
Efforts to solve specific social issues spreading throughout the region



"Success and Failure Experiences of Students and Young Researchers."
Formation of "realistic entrepreneurship/business start-up education space

"Start-up human resources development"
that is possible at universities where young people gather.

Universities that fosters the vitality of the community



Regional Co-creation