



Subcommittee on Digital Biohealth

- Leadership Organization : National Cerebral and Cardiovascular Center(NCVC)
- Representative : Kinya Otsu, President of NCVC
- Leader : Naoki Mochizuki, EBM/Director General, Research Institute/Project Leader of COI-NEXT
Shigehiro Asano, Director of Department of Industrial-Academic Collaboration/Deputy
Leader of COI-NEXT

1. Digital Biohealth Initiative

Formation of Global Bio-Community and Local Bio-Community



As Globally Recognized Bio-Innovation Hub

With its core unit being the world's most advanced research and development organization, cooperation among institutions and enterprises with a capability for bio-production system engineering commercializes research outcomes (seeds) smoothly.

PRIORITY By gaining both domestic and international publicity as well as facilitating collaboration among partners, attract more investment

Two Regions
(The Tokyo Area · Kansai Region)

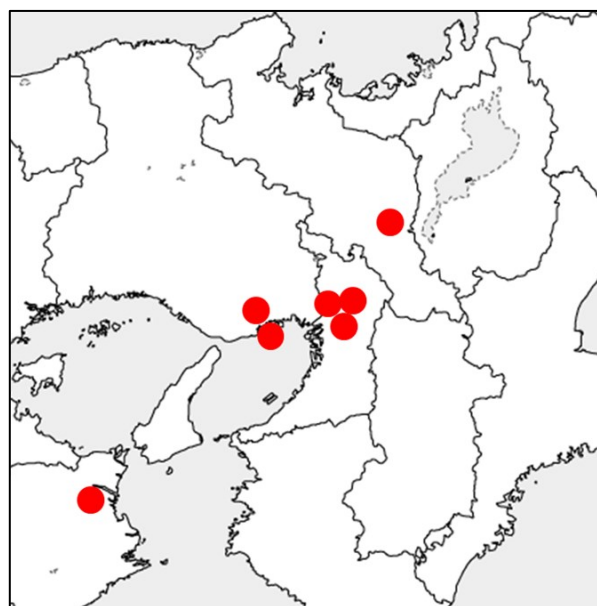


Revitalization of Local Economy

Cooperation among local businesses, agriculture, and regional universities will expand market territory for bioeconomy strategy and revitalize the local economy through entry into the world market, employment creation, etc.

PRIORITY Taking advantage of regional characteristics, expanding the market, and bearing fruits

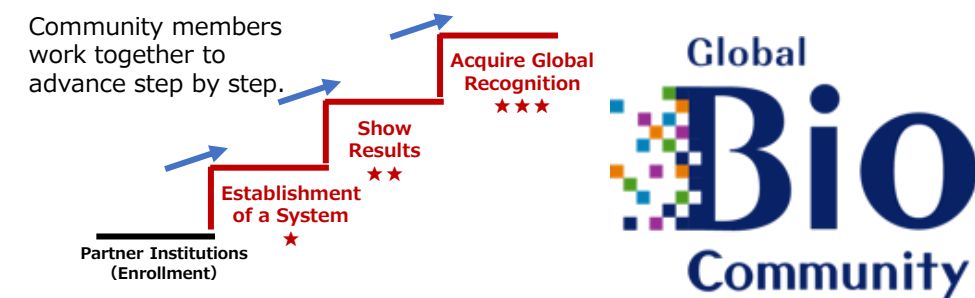
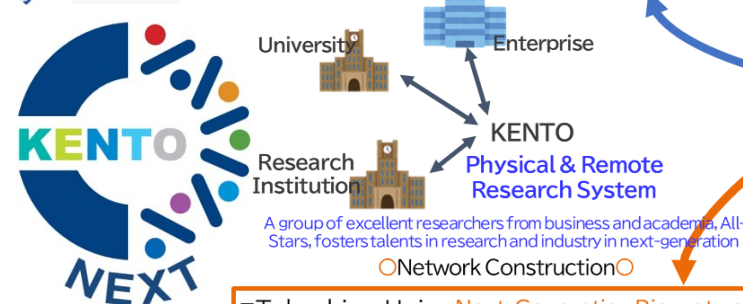
Evaluation and Assistance in Gradual Development by Authority Network



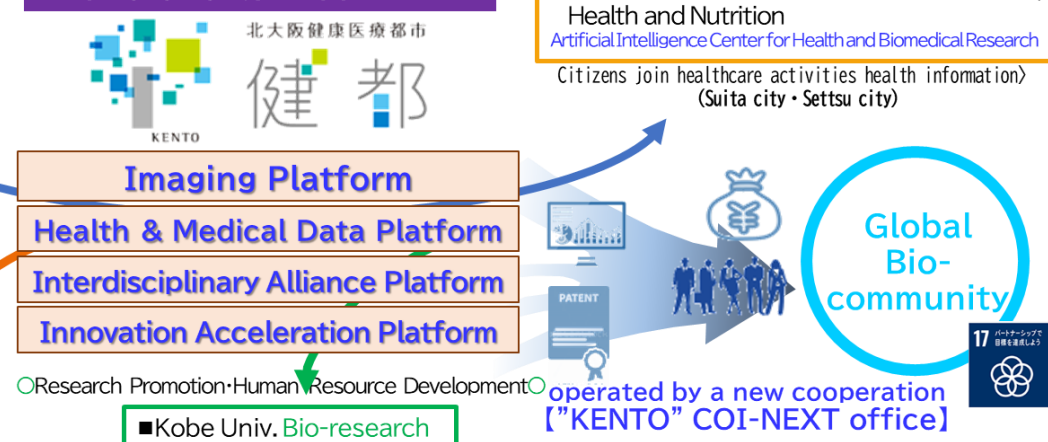
Evaluation of Members

Government Guideline
+
Self-set Goal

The viewpoint of Evaluation:
achievement status of marketing project milestones, open innovation, EGS, etc.



Social Implementation of Achievements in COI-NEXT



1. Digital Biohealth Initiative



- Overcome 4 major diseases
- Inclusive Society

Refractory Cardiovascular Disease
Refractory Cancer
Dementia
Emerging and re-emerging infectious

- Sensory dysfunction associated with 4 major diseases

- Build a digital healthcare system



Large-Scale Apartment Complex

NCVC, playing a core role, aims to implement an individualized health promotion program and optimized medical treatment based on lifelong health and medical information in the whole of Suita city and Settsu city, utilizing ICT technology, by the year 2030.

Wellness-Focused Housing for Senior Citizens



Unified Management of Health & Medical Data



Health & Medical Data Platform

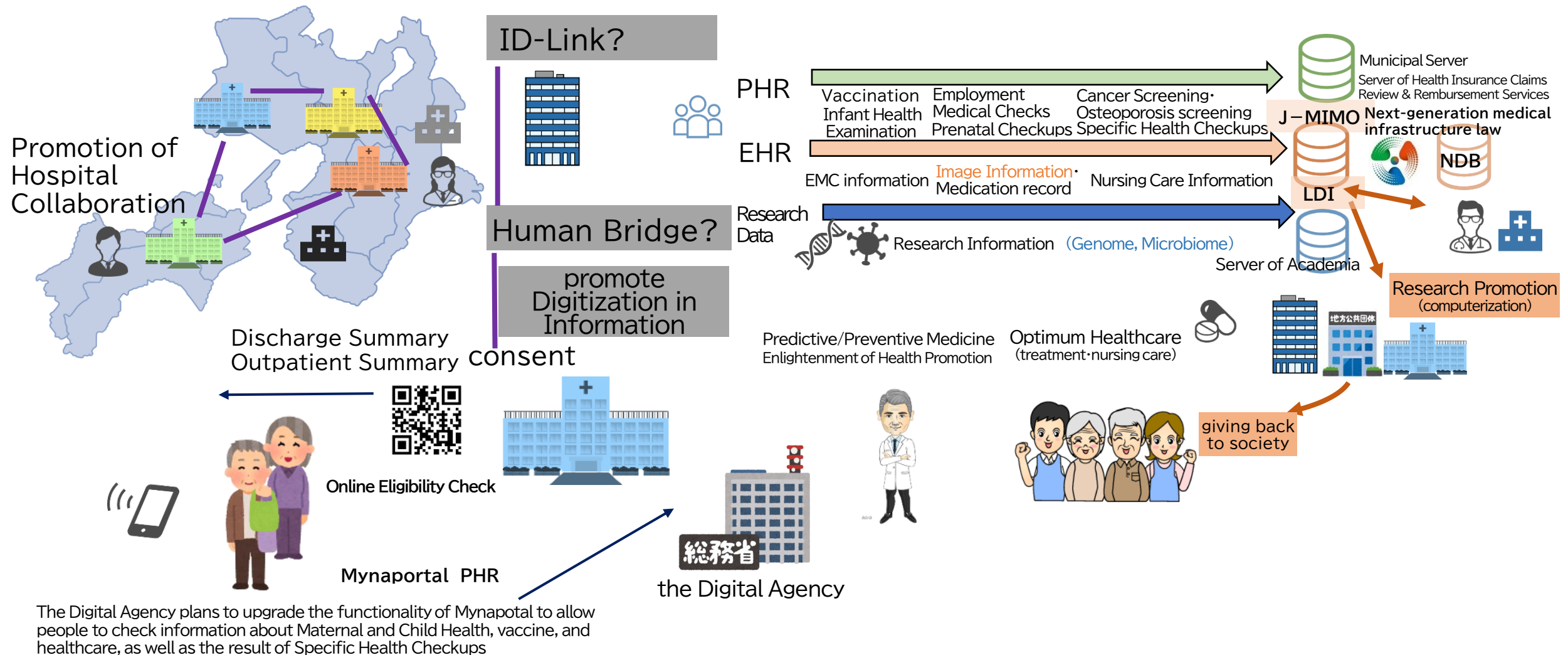
Delivery of optimum healthcare and best medical treatment utilizing predictive model



Management of Health/Medical/Research Data, their Feedback, and Promotion of Secondary Use for Citizens



Medical Data-Sharing System & Awareness-Raising of Patients and/or Inhabitants



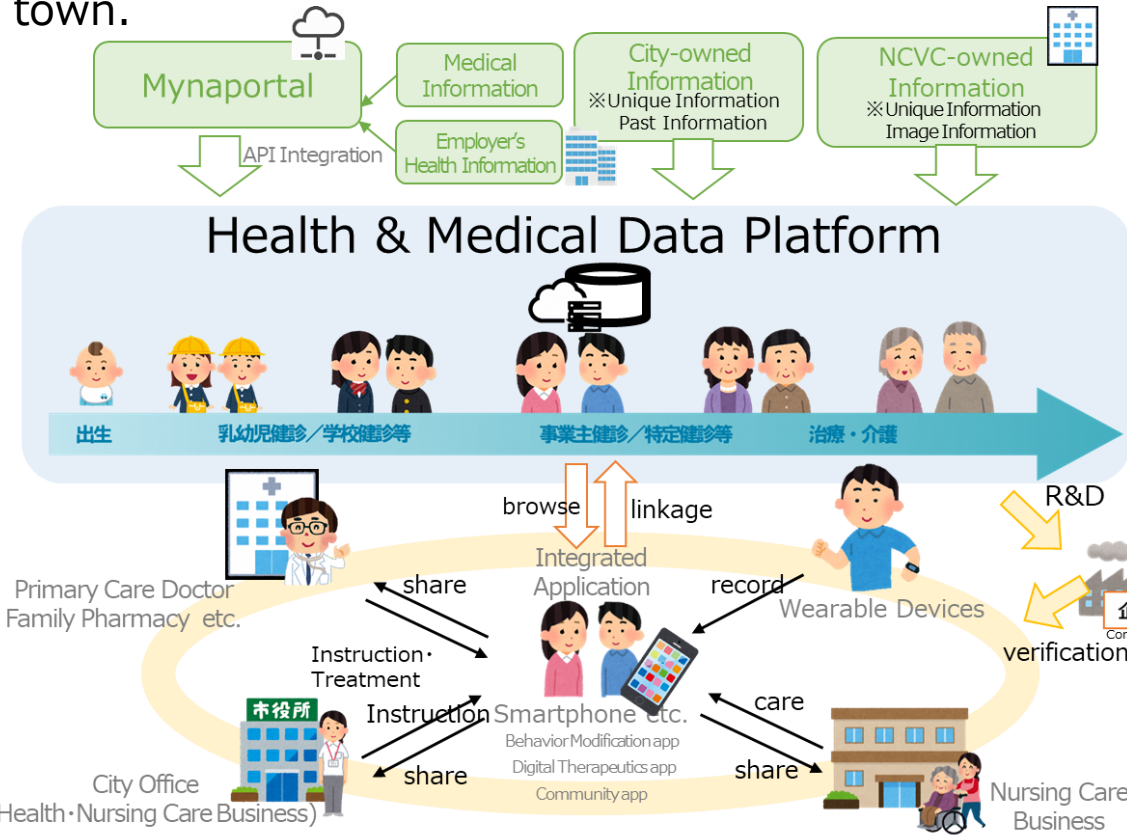
Subcommittee Collaboration for the Benefit of Society via Secondary Use of Medical Record Database



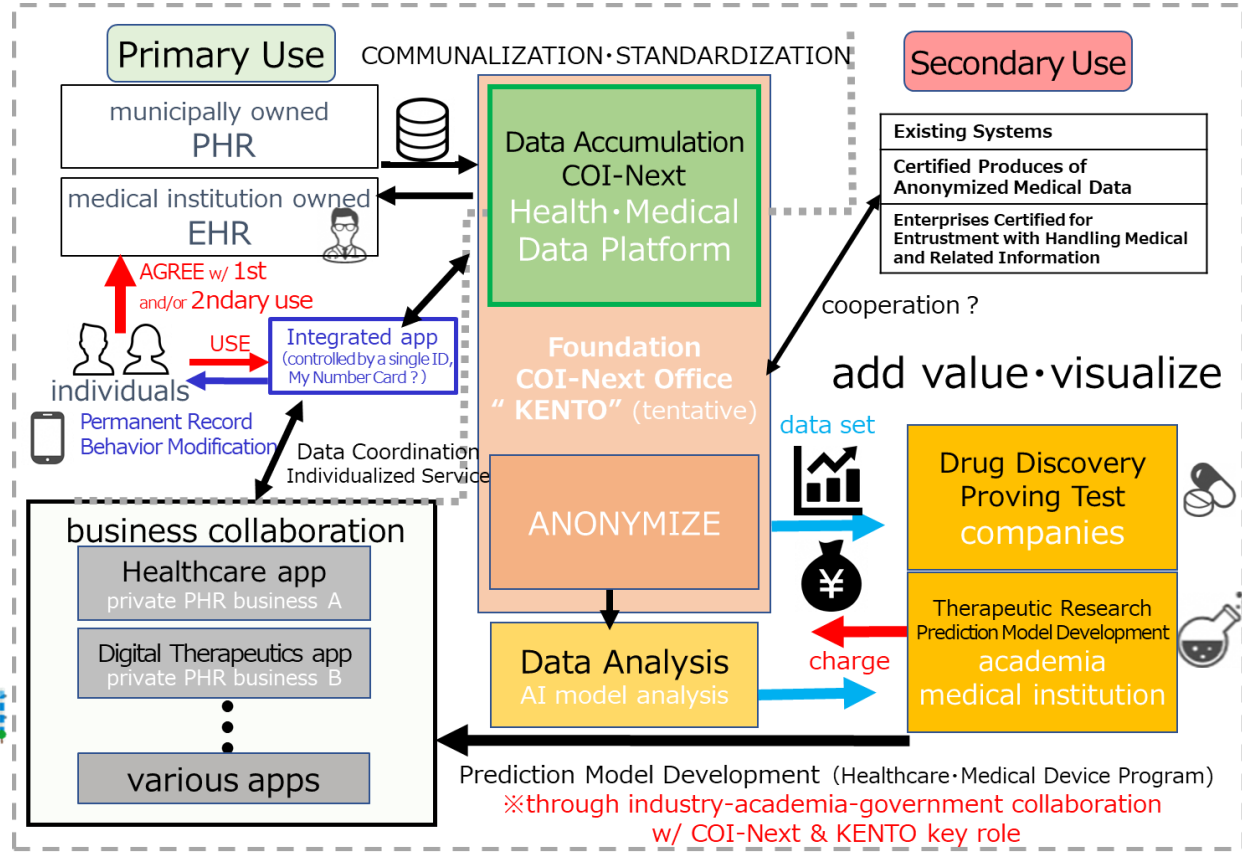
【Collaboration】

- Big Data Healthcare subcommittee
- Personal Data Subcommittee

■ Integrate individual health and medical records, develop a seamless and borderless database, and promote healthy habits of residents in the whole town.



■ Primary Use ~ Anonymize ~ Analysis ~ Secondary Use ~ Provide Service



【Partners】

National Institutes of Biomedical Innovation, Health and Nutrition, Suita-city, Settsu-city, Kowa Company. Ltd., Japan Selfcare Promotion Association, Hankyu Hanshin Holdings, Inc., CMIC Holdings Co., Ltd.