



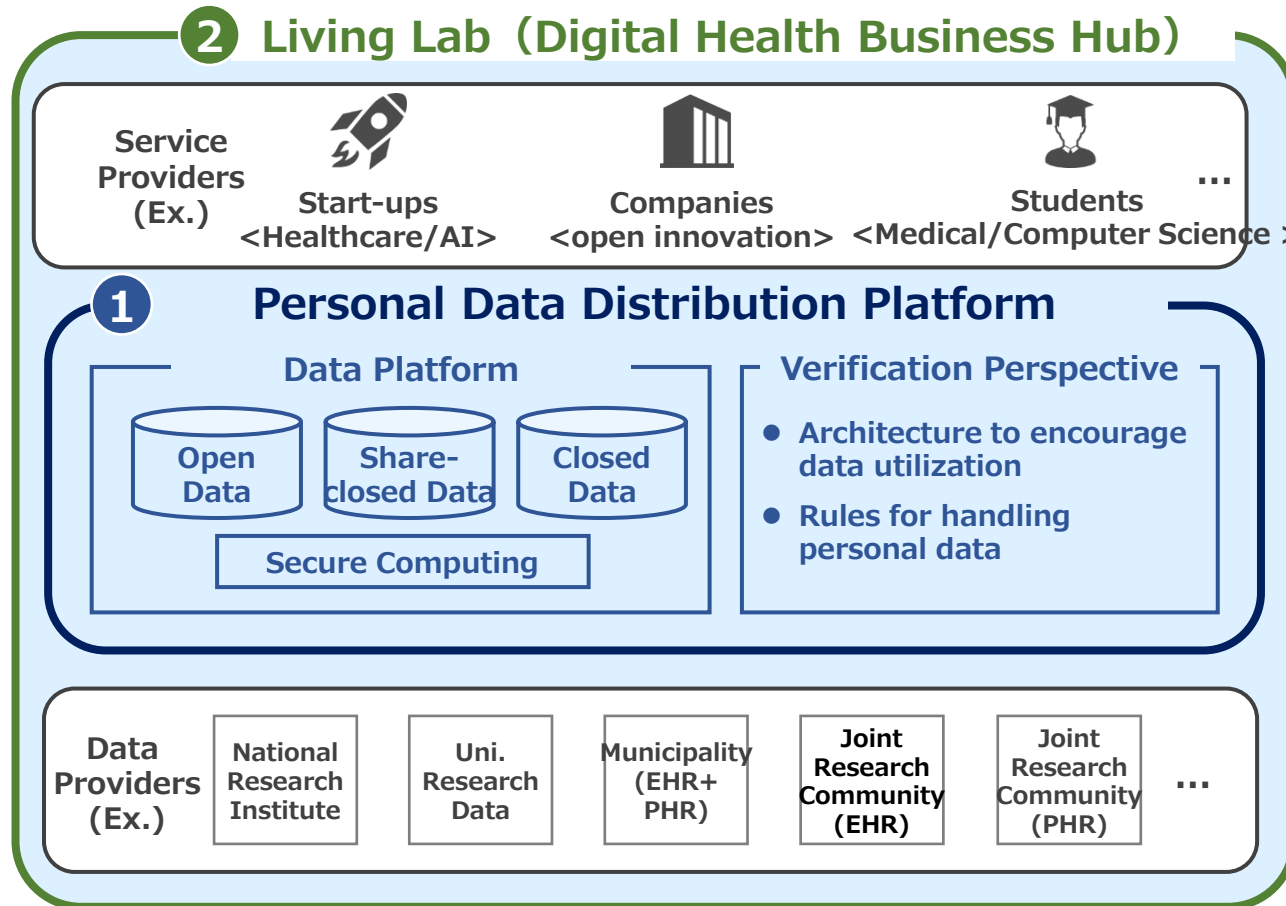
Personal Data Subcommittee

- Leadership organization : Nippon Telegraph and Telephone West Corporation
- Representative :
Taizou Kitayama, Executive Officer, Enterprise Business Department, Business and Marketing Department, NIPPON TELEGRAPH AND TELEPHONE WEST CORPORATION
- Leader :
Masato Terada, Director, Smart City Promotion Team, Enterprise Business Department, Business and Marketing Division, NIPPON TELEGRAPH AND TELEPHONE WEST CORPORATION
Yasushi Takimoto, Director, Smart City Promotion Team, Enterprise Business Department, Business and Marketing Division, NIPPON TELEGRAPH AND TELEPHONE WEST CORPORATION

1. Our goal

Organize the requirements for a "personal health data utilization environment" that contributes to the creation of global start-ups and new services in the healthcare field, and contribute to the development of a new business hub for digital health in the Kansai region.

Overview



Activity

Responsible

- 1 Organize requirements for personal data distribution infrastructure**
- Organize architectural requirements to guarantee data distribution and stable operation by clarifying current issues in the utilization of personal data and considering solutions to resolve them.
 - Organize data utilization rules and trust granting methods according to the type of personal data, opt-in or not, etc.

NTT West and other companies

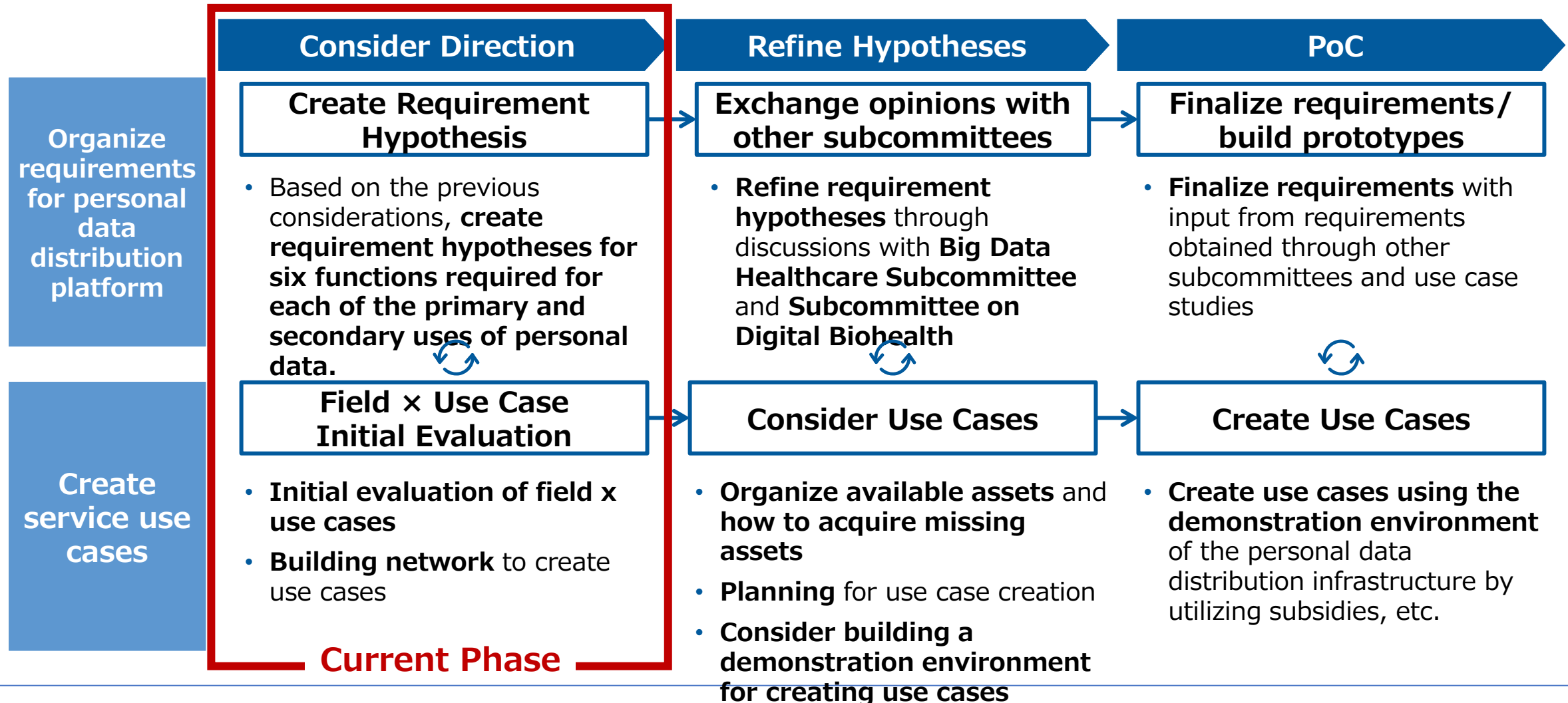
- 2 Organize requirements for Living Lab**
- Organize the business model, process, and functions of the Living Lab that will contribute to business creation.

Gather and expand members



2. Our approach

Based on the hypothesized requirements for a personal data distribution infrastructure and initial evaluation of service use cases, finalize the requirements through collaboration with other subcommittees, use case studies, and demonstrations, etc.





3. Personal data distribution Platform hypothetical requirements

Based on the definition of primary and secondary use of personal data, etc., examine the hypothesized requirements for the functions required of a personal data distribution infrastructure.

Utilization of Personal Data

Primary Use	Definition	Use health data for its intended purpose, such as health promotion, diagnosis and treatment
	Data User	<ul style="list-style-type: none"> Residents Private companies Medical Institutions Municipalities
	Data Utilization Purpose	<ul style="list-style-type: none"> Health promotion by providing health services Providing medical services Implementation of health promotion measures
Secondary Use	Definition	Use health data for purposes other than those originally notified (public benefit, health/medical science development, industry promotion, etc.)
	Data User	<ul style="list-style-type: none"> Private companies University Hospitals/Research Institutes Healthcare/medical venture companies
	Data Utilization Purpose	<ul style="list-style-type: none"> Development of methods for diagnosis, treatment and prevention of intractable diseases Pharmaceutical/medical device/medical application research and development AI development related to health and medical care

Functions Required (hypothesis)

Functions	Overview	Usage Scenes	
		Primary Use	Secondary Use
1 Health Data Linkage Function	Based on the consent of the individual, link health and medical data held by private companies, academic and research institutions, MynaPortal, local governments, etc.	<input type="radio"/>	<input type="radio"/>
2 Health Data Integrated Management Function	Visualization of health status and health risks by centralizing health and medical data held by private companies, academic and research institutions, Mynaportal, local governments, etc.	<input type="radio"/>	—
3 Personal Advisory Function	Propose personalized services appropriate to health risks and needs based on personal health medical data	<input type="radio"/>	—
4 Information Banking Function	Deposit and provide health and medical data to third parties based on the consent of the patient	<input type="radio"/>	<input type="radio"/>
5 Anonymization Function	Create anonymized processed medical information in accordance with the Commentary on Next Generation Medical Infrastructure Law when providing health and medical data to third parties.	—	<input type="radio"/>
6 Health Data Utilization Rule making and Control Function	Develop rules and consider use cases for the safe and secure distribution and utilization of health data.	<input type="radio"/>	<input type="radio"/>

4. Our scope of discussion

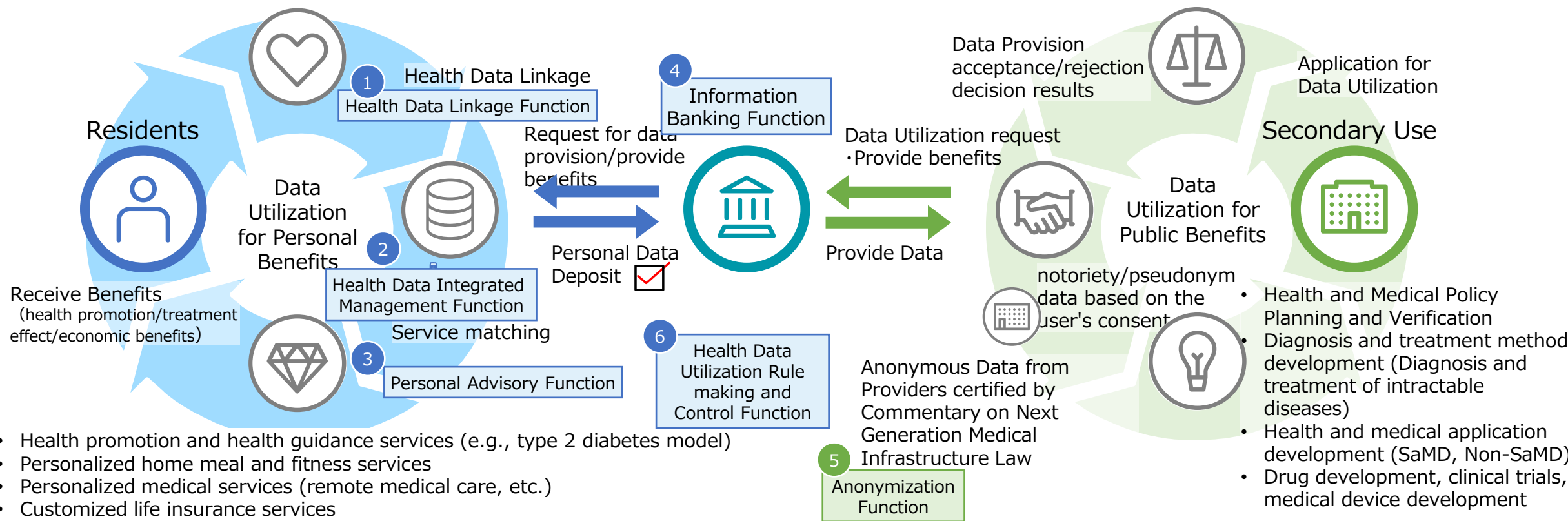
Expand personal data utilization for the first step by creating the service use cases related to the primary use business.

○ : Starting Point



- Data linkage via Mynportal based on residents' personal consent
- Data linkage through utilization of health and medical services

Judgment of appropriateness of data utilization from the perspective of ELSI(Ethical, Legal and Social Issues)

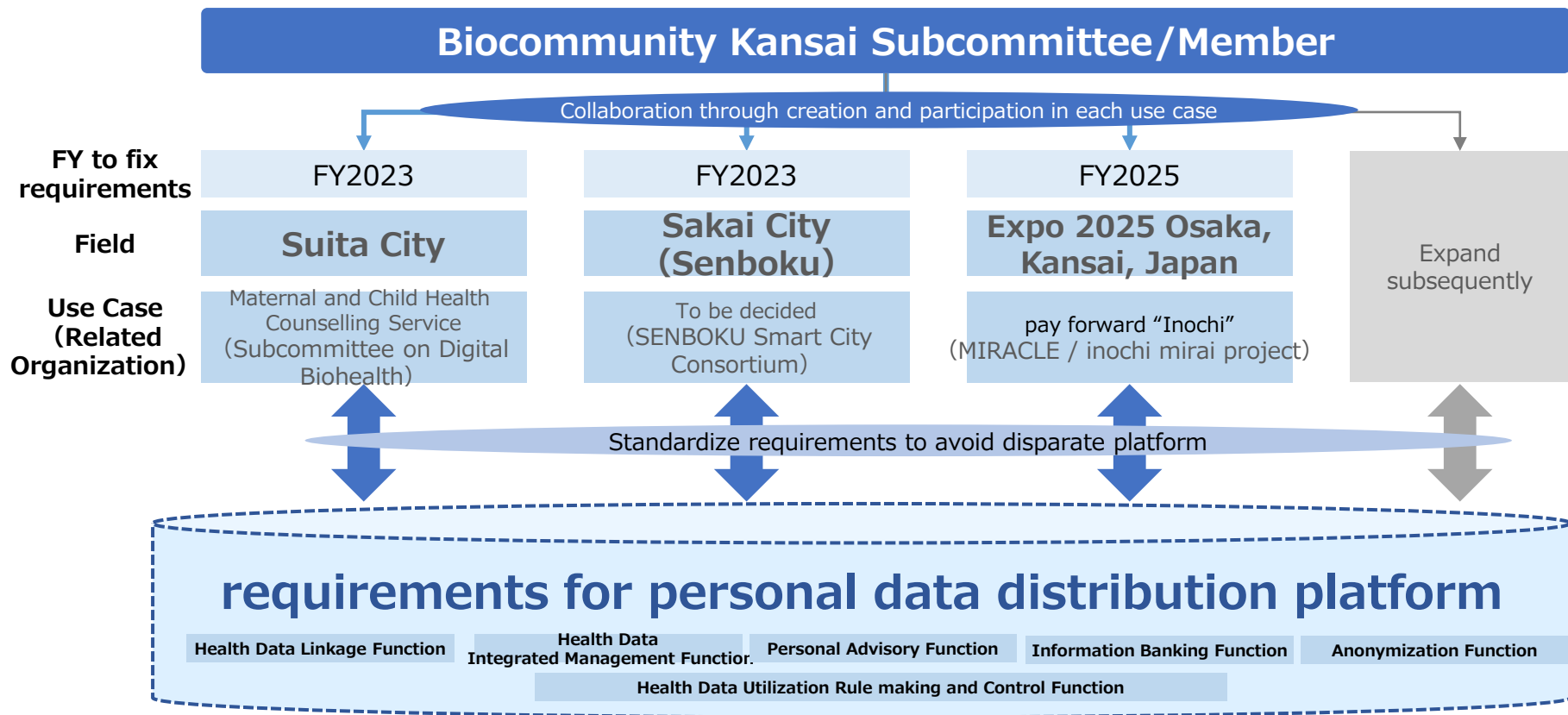


- Health promotion and health guidance services (e.g., type 2 diabetes model)
- Personalized home meal and fitness services
- Personalized medical services (remote medical care, etc.)
- Customized life insurance services



5. Our Activities

Participate in BiocK subcommittee meetings and multiple use cases in the Kansai, organize requirements for the personal data distribution infrastructure, and share them with subcommittees/members through BiocK.



Our Activities

Create use cases

- ✓ Coordinate with each related organization to handle as a use case of BiocK (Those of BiocK subcommittee will be the first priority).
- ✓ Encourage BiocK subcommittees/members to participate in each use case

Organizing the Requirements for a Personal Data Distribution Platform

- ✓ Organize requirements for each use case and deploy to subcommittees/members through BiocK